

EXPLANATORY PLAN OF PART OF LOTS 1, 2, 3 AND 4
SECTION 18 TOWNSHIP 1 NEW WESTMINSTER DISTRICT PLAN BCP-----
TO ACCOMPANY COVENANT UNDER SECTION 219

PLAN BCP-----

PURSUANT TO SECTION 99 (1) (e) LAND TITLE ACT
"FOR TREE PRESERVATION PURPOSES"

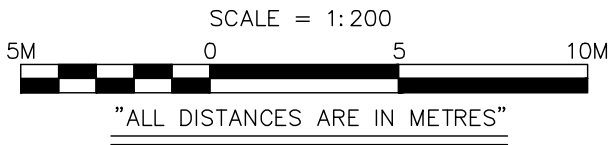
DEPOSITED IN THE LAND TITLE
OFFICE AT NEW WESTMINSTER, B.C.
THIS ___ DAY OF _____, 2009.

REGISTRAR

CITY OF SURREY
B.C.G.S. 92G.006

BOOK OF REFERENCE

LOT	DESCRIPTION	PLAN	AREA
1	SECTION 18 TOWNSHIP 1	BCP-----	44.1 m2
2	SECTION 18 TOWNSHIP 1	BCP-----	193.5 m2
3	SECTION 18 TOWNSHIP 1	BCP-----	122.1 m2
4	SECTION 18 TOWNSHIP 1	BCP-----	23.2 m2
4	SECTION 18 TOWNSHIP 1	BCP-----	65.1 m2



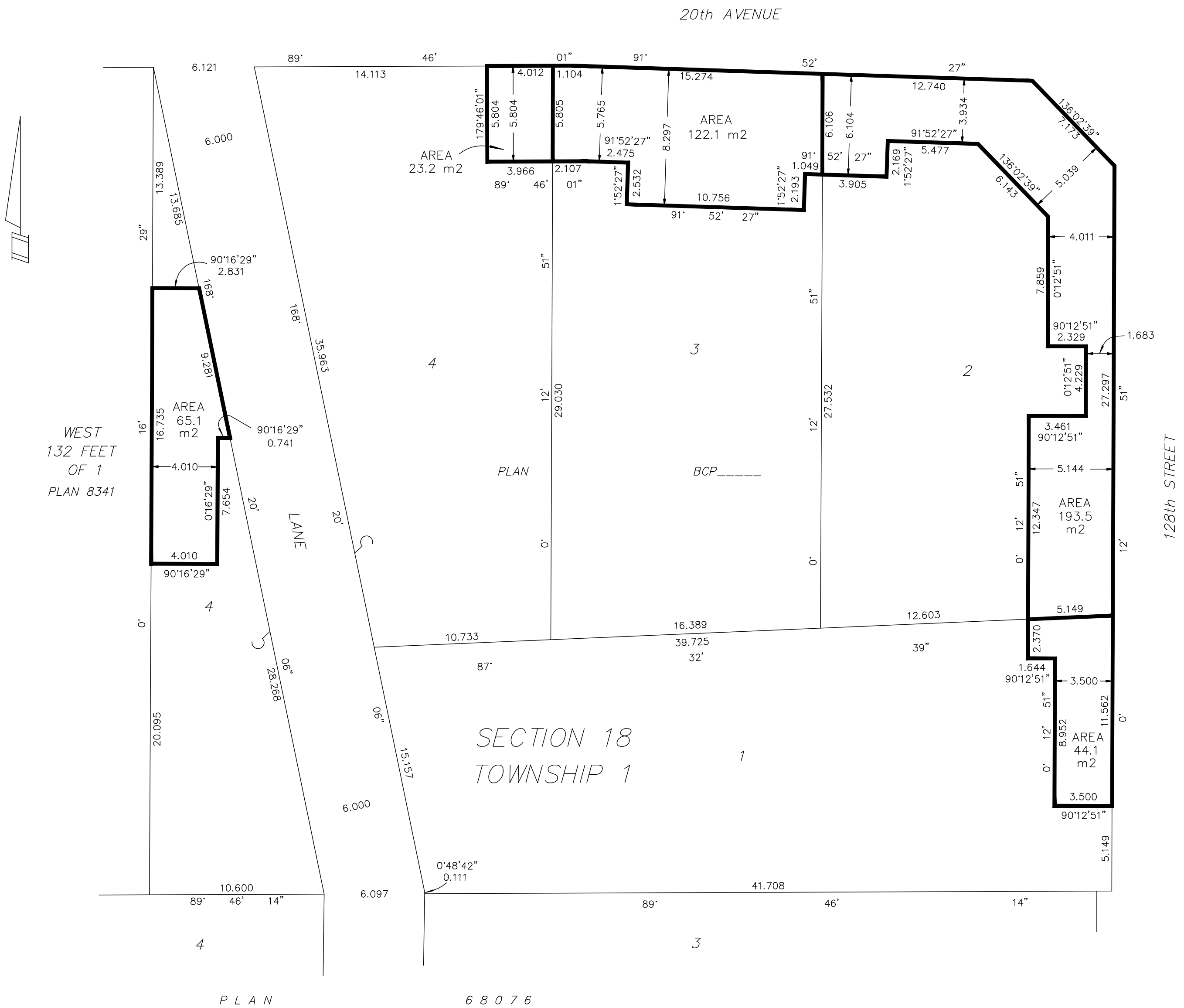
The intended plot size of this plan is 432mm (17") in width
by 559mm (22") in height when plotted at a scale of 1:200

INTEGRATED SURVEY AREA NO. 1 (SURREY)
NAD83 CSRS (GVRD2005)

GRID BEARINGS ARE DERIVED FROM PLAN BCP-----
GEODETTIC CONTROL MONUMENTS 5657 AND 5658
THIS PLAN SHOWS HORIZONTAL GROUND-LEVEL DISTANCES,
EXCEPT WHERE OTHERWISE NOTED.
TO COMPUTE GRID DISTANCES, MULTIPLY GROUND-LEVEL
DISTANCES BY COMBINED FACTOR 0.9995902

LEGEND

m2 Denotes square metres



CERTIFIED CORRECT ACCORDING TO
LAND TITLE OFFICE RECORDS DATED
THIS 2nd DAY OF MARCH, 2009
THE PLAN WAS COMPLETED AND CHECKED AND
THE CHECKLIST FILED UNDER # _____
THIS 2nd DAY OF MARCH, 2009

SOUTH FRASER LAND SURVEYING LTD.
B.C. LAND SURVEYORS
SUITE 101 - 7485 130th STREET
SURREY, B.C. V3W 1H8
TELEPHONE: 604 599-1886
FILE: 07436COV-3

THIS PLAN LIES WITHIN THE
GREATER VANCOUVER REGIONAL DISTRICT

SIGNATURE OF B.C.L.S.

07436COV-3